



Maxwell 16[®] System

Automated extraction of DNA, RNA or total nucleic acid



Maxwell 16[®] Instrument is smaller and easier to use than most automated systems. The compact footprint fits right on a bench or inside a biohazard hood. It's simple in design and reliable to operate. Processing up to 16 samples in 45 minutes makes it the perfect capacity for most clinical labs. So you can deliver better results faster and with confidence. Personal instrument. Personal results. Personal service and support. All made better with Personal Automation.

Personal Automation for the Clinical Lab



Fast.

Add sample. Load instrument. Press start. One to 16 samples processed in 30–45 minutes. Less hands-on labor. Less manual extraction. More samples in less time with no additional laboratory technicians. Bar code sample identification streamlines sample tracking.

Easy.

Touch screen operation. Prefilled reagent cartridges for a wide variety of sample types: blood, serum, plasma, cells, fresh/frozen or FFPE tissue; and applications: DNA, RNA or total nucleic acid purification.

Reliable.

Robust operation. Comprehensive service and support. Value-added Installation Qualification (IQ) and Operational Qualification (OQ) services to streamline validation and documentation. UV light assists with instrument decontamination.



Reliable extraction for consistent results

With DNA tests increasingly being used for organ typing, the HLA/transplant lab has to continue to evolve its capabilities. False negative, false positive or incomplete typing results can result in delays or incomplete profiles. Skilled technologists need to extract genomic DNA from blood or buffy coat samples reliably and accurately. That's Maxwell.

Why Maxwell for an HLA/Transplant lab?

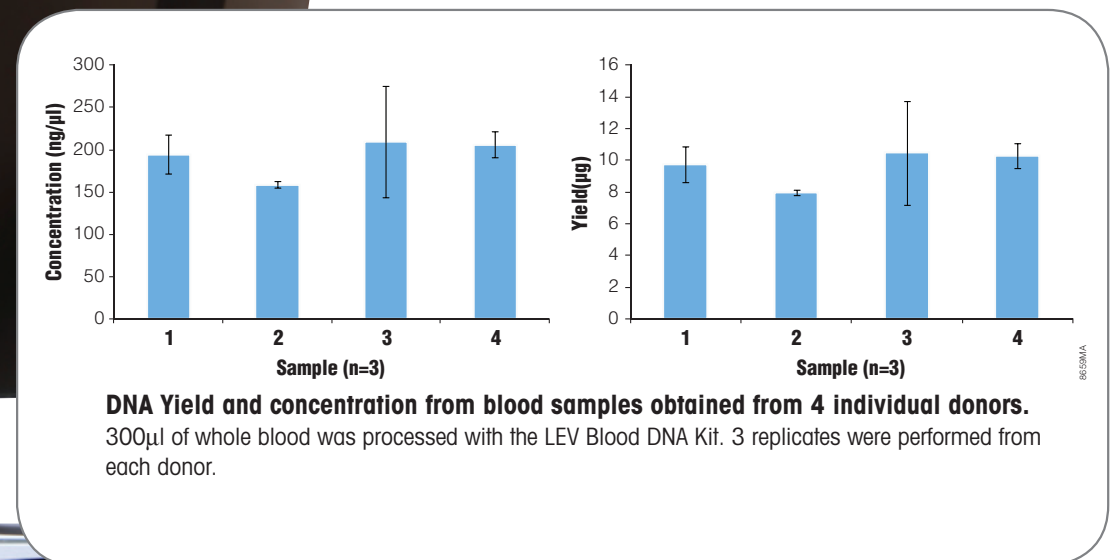
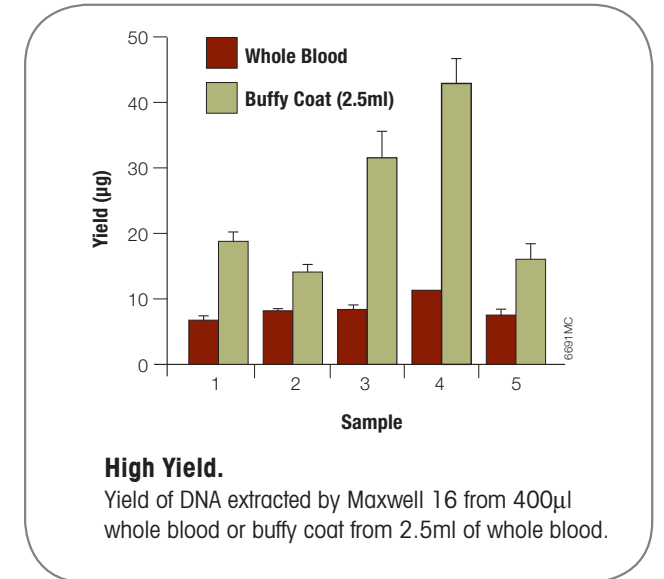
An HLA lab was using manual column-based DNA extraction methods but was frustrated by the hands-on time and labor required.

Increasing numbers of samples push lab capabilities.

The number of solid organ and bone marrow transplants increased, pushing the lab to work faster. Labor-intensive manual protocols led to variable results and errors for less experienced technologists.

Maxwell provided the solution.

Implementing automation reduced weekly DNA extraction time from sixteen hours a week to less than 4 hours per week with improved consistency and higher yields. Errors were reduced and technologists were able to do more with renewed confidence.



**PRODUCT
& ORDER
INFO**

Simple extraction

for personalized medicine

Why Maxwell for a Molecular Pathology lab?

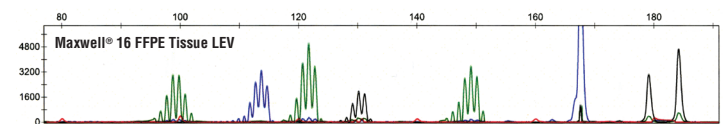
A molecular pathology lab could not consistently amplify PCR products from DNA manually extracted from FFPE tissue.

Organic solvents and labor-intensive processing limits efficiency.

Traditional home-brew organic extraction methods limited lab productivity, unnecessarily exposed technologists to potential hazardous chemicals and resulted in poor DNA recovery and failed PCR reactions.

Maxwell provided the solution.

Implementing automation improved consistency of DNA recovery. More PCR amplifications provided usable data. Technologists were happier not having to work with xylene and other hazardous organic solvents.



Better Results.

Multiplex-PCR amplification of microsatellite alleles from human DNA purified by Maxwell 16 from FFPE tissue analyzed using the MSI Analysis System, Version 1.2 (Cat.# MD1641)

**PRODUCT
& ORDER
INFO**

Confident operation from comprehensive support and service.

Promega provides a series of support and service options so you can always experience the benefits of Personal Automation. Technical support is provided by a global team of technical services scientists, field support scientists and service engineers. Warranties and service plans give you peace of mind, minimal instrument downtime and predictable service costs.

The clinical lab demands accurate and thorough documentation of instrument performance. Promega offers Installation Qualification (IQ), Operational Qualification (OQ) and Preventive Maintenance (PM) services to ensure smooth operation. These services help assure that you have adequate training and documentation of performance characteristics.

Instrument Specifications

Standard Components – All of the AS3000 Maxwell® MDx Instruments include:

- 1 Maxwell® 16 MDx Instrument
- 1 power cable
- 1 UV lamp bulb*
- 1 SD card
- 1 SD card reader package (contains SD card reader and cable)
- 1 CD containing the technical manual
- 1 Quick Start Guide
- 1 Bar Code Reader
- 1 CD Containing Data Export Software
- 1 RS-232 Cable for communication with a computer or printer
- 1 RS-232/USB Adaptor for data export to computer

Processing Time	30–45 minutes (depending on sample type and method)
Number of Samples	up to 16
Elution Volume	50–300µl
Weight	42.7lb (19.4kg)
Dimensions	12.8W x 17.3D x 12.9H inches (33W x 44D x 33H cm)
Power Requirements	100–240VAC, 50–60Hz, 2.1A
Regulatory Compliance	General Purpose Medical Device (US only)

Ordering Information

Infectious Disease Labs

Product	Size	Cat#
Maxwell® 16 Total RNA Purification Kit ⁽¹⁾	48 preps	AS1050
Maxwell® 16 Viral Total Nucleic Acid Purification Kit ⁽¹⁾	48 preps	AS1150
Maxwell® 16 Tissue LEV Total RNA Purification Kit ⁽¹⁾	48 preps	AS1220
Maxwell® 16 Cell LEV Total RNA Purification Kit ⁽¹⁾	48 preps	AS1225
Maxwell® 16 SEV Hardware Kit	each	AS1200
Maxwell® 16 LEV Hardware Kit	each	AS1250
Maxwell® 16 MDx Instrument SEV ⁽¹⁾	each	AS3000-SC
Maxwell® 16 MDx Instrument LEV ⁽¹⁾	each	AS3000-LC

Service Products	Size	Cat#
Maxwell 16® Installation and Operation Qualifications	each	SA1021

HLA/Transplant Labs

Product	Size	Cat#
Maxwell® 16 Blood DNA Purification Kit ⁽¹⁾	48 preps	AS1010
Maxwell® 16 Cell DNA Purification Kit ⁽¹⁾	48 preps	AS1020
Maxwell® 16 Tissue DNA Purification Kit ⁽¹⁾	48 preps	AS1030
Maxwell® 16 Cell LEV DNA Purification Kit ⁽¹⁾	48 preps	AS1140
Maxwell® 16 SEV Hardware Kit	each	AS1200
Maxwell® 16 Tissue LEV Total RNA Purification Kit ⁽¹⁾	48 preps	AS1220
Maxwell® 16 LEV Blood DNA Kit	48 preps	AS1290
Maxwell® 16 LEV Hardware Kit	each	AS1250
Maxwell® 16 MDx Instrument SEV ⁽¹⁾	each	AS3000-SC
Maxwell® 16 MDx Instrument LEV ⁽¹⁾	each	AS3000-LC

Service Products	Size	Cat#
Maxwell 16® Installation and Operation Qualifications	each	SA1021

Pathology Labs

Product	Size	Cat#
Maxwell® 16 Blood DNA Purification Kit ⁽¹⁾	48 preps	AS1010
Maxwell® 16 LEV Blood DNA Kit	48 preps	AS1290
Maxwell® 16 Cell DNA Purification Kit ⁽¹⁾	48 preps	AS1020
Maxwell® 16 Tissue DNA Purification Kit ⁽¹⁾	48 preps	AS1030
Maxwell® 16 Total RNA Purification Kit ⁽¹⁾	48 preps	AS1050
Maxwell® 16 FFPE Tissue LEV DNA Purification Kit ⁽¹⁾	48 preps	AS1130
Maxwell® 16 Cell LEV DNA Purification Kit ⁽¹⁾	48 preps	AS1140
Maxwell® 16 Tissue LEV Total RNA Purification Kit ⁽¹⁾	48 preps	AS1220
Maxwell® 16 Cell LEV Total RNA Purification Kit ⁽¹⁾	48 preps	AS1225
Maxwell® 16 SEV Hardware Kit	each	AS1200
Maxwell® 16 LEV Hardware Kit	each	AS1250
Maxwell® 16 MDx Instrument SEV ⁽¹⁾	each	AS3000-SC
Maxwell® 16 MDx Instrument LEV ⁽¹⁾	each	AS3000-LC

Service Products	Size	Cat#
Maxwell 16® Installation and Operation Qualifications	each	SA1021

⁽¹⁾For Laboratory Use.

Maxwell is a registered trademark and Personal Automation is a trademark of Promega Corporation.

